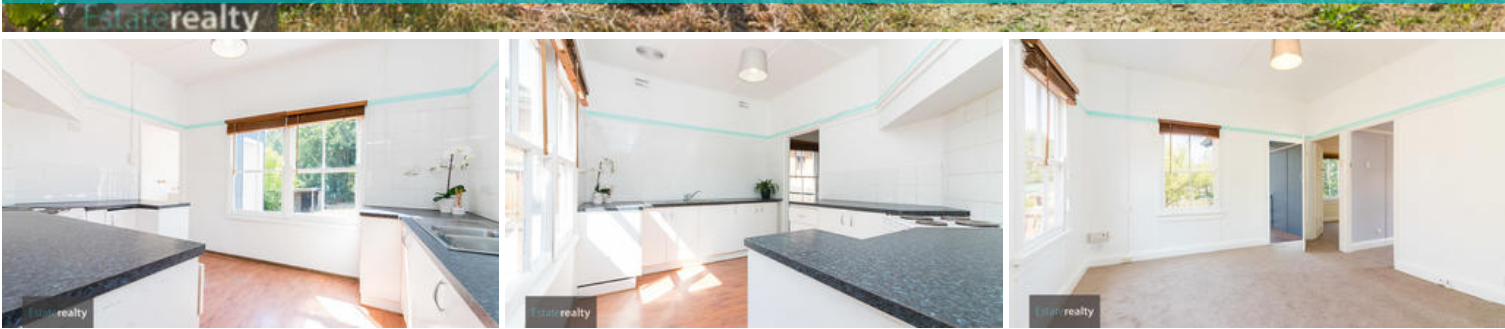




14 Wilga St, Captains Flat



UPDATED COTTAGE WITH HILLSIDE VIEWS

This cute original Captains Flat cottage is an excellent investment or first home. The property was built in the 1940s with hardwood frames and iron roof, but has since been updated and freshly decorated. We expect to see 280 to 300 dollars per week for rental.

When you first see the home, Georgian timber windows feature alongside the entrance steps and balustrade. The living room is bright and full of character. The picture rail, panelled ceiling and the timber windows are all freshly decorated and add to the cottage features. There are two great size bedrooms, one with direct access to the two way bathroom. The living areas and bedroom's also have newly laid carpets. A large kitchen has plenty of bench space and flows through to the large laundry, separate toilet and new back deck with views of the surrounding hills. The property has reverse cycle air conditioning and NBN connection.

The garden is spacious and has plenty of space for running around or planting your own veggie patch. Garden beds are well maintained and need little work to keep in order. Fruit bearing trees consist of apples and pears. There is a great shed in the back yard which has been used over the years as a potters shed, artist studio, storage and place to put the bikes and outside toys.

Captains Flat is a town in the Southern Tablelands of New South Wales in the Palerang Shire. It is suggested that a bullock named "Captain" from Foxlow station, 12

The above information provided has been furnished to us by the vendor/s. We have not verified whether or not that information is accurate and do not have any belief in one way or the other in its accuracy. We do not accept any responsibility to any person for its accuracy and do no more than pass it on. All interested parties should make and rely upon their own inquiries in order to determine whether or not this information is in fact accurate.

🛏 2 🚿 1 🚗 3

Price SOLD for \$200,000
Property Type Residential
Property ID 656
Land Area 500 m2

Agent Details

Ben Stevenson - 0467 046 637
Chris Dingle - 0400 498 822

Office Details

Queanbeyan
1 142 Monaro Street Queanbeyan NSW
2620 Australia
(02) 6297 3555

